

WFP CENTRE OF EXCELLENCE

# VIRTUAL EXCHANGES

REMOTE SUPPORT TO COUNTRIES

# PUBLICATIONS COLLECTION

Discover the resources for technical assistance and knowledge-sharing produced by the WFP CoE team

**World Food Programme**  
Centre of Excellence against Hunger

## IMPLEMENTING THE BRAZILIAN NATIONAL SCHOOL FEEDING PROGRAMME DURING THE COVID-19 Pandemic

Due to the COVID-19 pandemic, on March 20th of 2020, Brazil declared a State of Public Calamity and Public Health Emergency of International Importance. Aiming to control the spread of the disease, the Ministry of Health recommended the cessation to follow social isolation and quarantine measures, which included a temporary suspension of the school calendar.

The National Fund for Education Development (FNDE) is the institution responsible for implementing the Brazilian National School Feeding Programme (PNAE), attached within the Ministry of Education. When public schools are closed due to the pandemic, FNDE has decided to distribute the food purchased for PNAE to children's parents and guardians in the form of food baskets - which the government is calling "kits".

This document summarizes the main recommendations for school feeding authorities and managers to organize the assembly and distribution of these kits, previously related by FNDE's "Guidelines for the Execution of PNAE during the Emergency Situation arising from the COVID-19 Pandemic".

**World Food Programme**  
Centre of Excellence against Hunger

## SCHOOL FEEDING IN TIMES OF COVID-19

### WHAT CAN GOVERNMENTS DO?

Last updated: April 17th, 2020

With the advance of COVID-19 worldwide, thousands of schools have suspended their activities and around 368 million children no longer have access to school feeding. The provision of meals in schools represents a stable and practical supply of food to children, contributing to improve nutrition, health and academic performance. In social vulnerability situations, school feeding constitutes an indirect income transfer to families, which can reach up to 10% of the household budget. With classes suspended in almost 200 countries, vulnerable families are doubly affected by the lack of access to food in the school environment, in combination with the income reduction caused by the decline in economic activity.

This document aims to share some of these experiences to inform decision-makers about different models that can be considered by countries to meet their children's food and nutrition needs, which are exacerbated under the current pandemic context. The information provided here was gathered from WFP Country Offices, government focal points in Brazil and online media sources.

It is important to state that this is not a prescriptive document. But one to be used for informative and advocacy purposes. The measures listed here are examples of how national and sub-national governments, along with WFP, have been adapting their regular school feeding programmes, while coping with the COVID-19 pandemic.

**World Food Programme**  
Centre of Excellence against Hunger

## SCHOOL FEEDING IN PORTUGUESE SPEAKING COUNTRIES

GOOD PRACTICES SERIES

GABE VERDE • SÃO TOMÉ AND PRÍNCIPE • BRAZIL • MOZAMBIQUE

**World Food Programme**  
Centre of Excellence against Hunger

## FINANCING SCHOOL FEEDING

### Levers to enhance national programmes

GOOD PRACTICES SERIES

**POLICY BRIEF #3**

## PNAE'S LEGAL AND POLICY BASIS: Building a Pathway to Homegrown School Feeding

**World Food Programme**  
Centre of Excellence against Hunger

**FNDE**

**POLICY BRIEF #2**

## FOOD AND NUTRITION EDUCATION IN BRAZILIAN SCHOOLS

### NUTRITION BEYOND SCHOOL MEALS: SCHOOL CURRICULUM AND TEXTBOOKS

**World Food Programme**  
Centre of Excellence against Hunger

**FNDE**

**POLICY BRIEF #1**

## FINANCING OF THE BRAZILIAN SCHOOL FEEDING PROGRAMME PNAE

**World Food Programme**  
Centre of Excellence against Hunger

**FNDE**

**World Food Programme**  
Centre of Excellence against Hunger

## TRAINING FOOD HANDLERS WORKING IN SCHOOL FEEDING

Coordinating Centre for Nutrition and School Feeding at the Federal University of Rio Grande do Sul, Brazil

BRASILIA • 2017

**World Food Programme**  
Centre of Excellence against Hunger

## MANUAL FOR THE APPLICATION OF ACCEPTABILITY TESTS

IN THE NATIONAL SCHOOL FEEDING PROGRAMME (PNAE)

BRASILIA • 2017

**World Food Programme**  
Centre of Excellence against Hunger

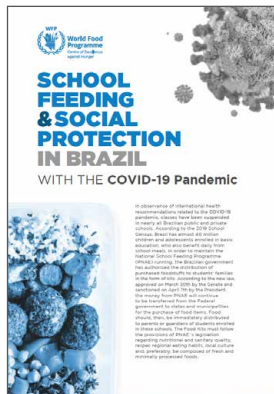
## FOOD AND NUTRITION EDUCATION DAY

### BEST PRACTICES IN EARLY CHILDHOOD EDUCATION

BRASILIA • 2017



**World Food Programme**  
Centre of Excellence against Hunger



09/04/20

## School Feeding and Social Protection in Brazil with the COVID-19 Pandemic

Public and private schools suspended classes throughout Brazil as part of the Covid-19 prevention actions. This means that the nearly 40 million children and adolescents enrolled in basic education – and who also benefit from daily school meals – are no longer receiving this service.

The publication presents the actions being taken in Brazilian states and municipalities to maintain school meals distribution during the crisis.

[Read publication >>](#)

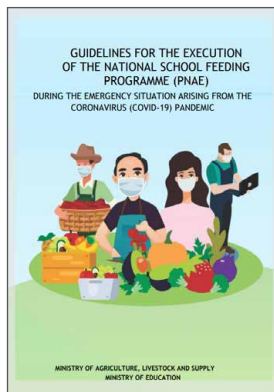


22/04/20

## School Feeding in Times of COVID-19: What can Governments do?

With the advance of COVID-19 worldwide, thousands of schools have suspended their activities and around 368 million children no longer have access to school meals. The provision of meals in schools represents a stable and predictable supply of food to children, contributing to improve nutrition, health, and academic performance. In order to ensure the continuity of school meals initiatives, many governments are restructuring their programmes. This publication presents some of these experiences to inform decision-makers about different models that can be considered by countries to meet their population's food and nutrition needs, which are exacerbated under the current pandemic context.

[Read publication >>](#)



24/04/20

## Guidelines for the Execution of PNAE during the Emergency Situation arising from the COVID-19 Pandemic

With the suspension of the school calendar due to the COVID-19 pandemic, the Brazilian national government has decided to distribute the food purchased for National School Feeding Programme (PNAE) to beneficiary children's parents and guardians in the form of food baskets. The document explains the process and recommendations to school feeding professionals to plan the assemblage and distribution of these kits.

[Read publication >>](#)

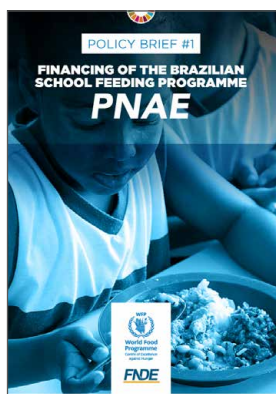


28/04/20

## Implementing the Brazilian National School Feeding Programme During the Covid-19 Pandemic

The WFP Centre of Excellence against Hunger Brazil has created a document that summarises the main recommendations for school feeding nutritionists and managers to plan the assemblage and distribution of school feeding food kits, as detailed by FNDE's Guidelines for the Execution of PNAE during the Emergency Situation arising from the COVID-19 Pandemic.

[Read publication >>](#)



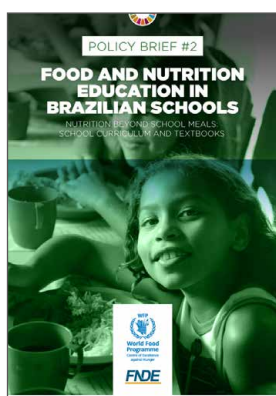
11/07/19

### **Policy Brief #1**

#### **Financing of the Brazilian School Feeding Programme PNAE**

Revisiting the main milestones of the PNAE over six decades, this publication details the various instruments of tax collection and creation of funds that allowed the stable financing of the programme. The Brazilian experience in financing school feeding underscores the importance of a legal provisions for budget allocation for school meals to ensure the progressive expansion of the coverage and quality of meals offered by PNAE in the 27 states and more than 5,000 municipalities in the country.

[Read publication >>](#)



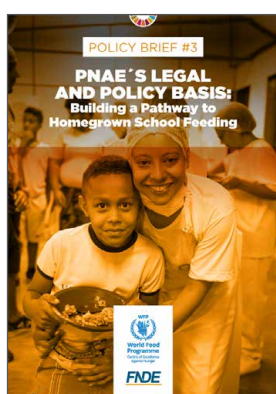
09/08/19

### **Policy Brief #2**

#### **Food and Nutrition Education in Brazilian Schools**

This policy brief explores how the Brazilian National School Feeding Programme (PNAE) has integrated food and nutrition education into the school environment through a two-pronged strategy: by including thematic knowledge in the official school curriculum, and through the Brazilian Textbooks Programme.

[Read publication >>](#)



15/08/19

### **Policy Brief #3 - PNAE'S Legal and Policy Basis: Building a Pathway to Homegrown School Feeding**

The publication presents a timeline of the Brazilian pathway up to the implementation of a home-grown school feeding programme, highlighting the main legal and institutional bases for food and nutrition security developed between 1955 and 2010. The historic developments detailed in this document leave no doubt that the process of turning PNAE into a home-grown school feeding programme was progressive and that it speaks to a broader context of FNS developments in Brazil. PNAE's story showcases the importance of having institutional and legal guarantees, as well as multi-sectoral and coordinated mechanisms that can serve as the basis for a programme to evolve.

[Read publication >>](#)

## GOOD PRACTICES SERIES



06/09/19

### **Good Practice #1** **School Feeding in Portuguese Speaking Countries**

The Good Practices Series is a collection of thematic publications of the WFP Centre of Excellence against Hunger aiming to provide good examples of policies, actions and experiences related to school feeding from various countries. The first publication of the series provides examples of good practices in school feeding programs, in Portuguese-speaking countries. The document compiles processes, laws and strategies implemented in Cape Verde, Sao Tome and Principe, Brazil and Mozambique.

[Read publication >>](#)



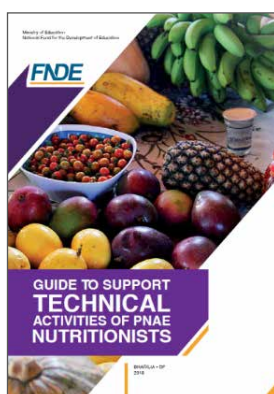
31/10/19

### **Good Practice #2 - Financing School Feeding:** **Levers to Enhance National Programmes**

The second publication in the Good Practices Series showcases examples of financing tools for school feeding programmes in different countries with distinct contexts. The document features good practices from Cambodia, Nigeria, Guatemala, Jordan, Mozambique, Sri Lanka and Tunisia.

[Read publication >>](#)

## THE BRAZILIAN EXPERIENCE

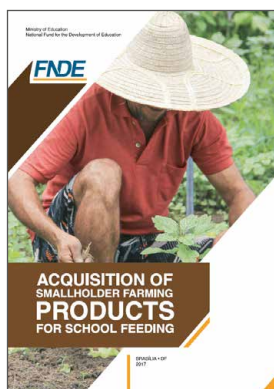


2018

### **Guide to Support Technical Activities of PNAE Nutritionists**

This publication is a support material that aims to provide technical and practical information and recommendations related to assignments of nutritionists working in the National School Feeding Programme (PNAE). Produced by the National Fund for the Development of Education, as part of the Brazilian Ministry of Education, the document provides practical strategies to assist PNAE nutritionists in completing their assignments, as well as solving obstacles and hardships within the National School Feeding Programme.

[Read publication >>](#)

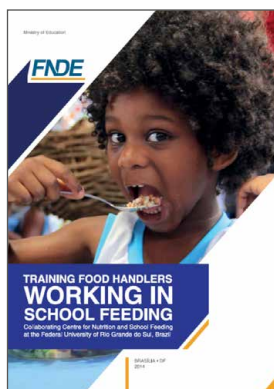


2017

### **Acquisition of Smallholder Farming Products for School Feeding**

The Manual and its attachments provide the steps and operation arrangement for the acquisition of smallholder farming products for school feeding to elementary education students in the PNAE scope. With a step by step description of the process, the document explains budgeting, coordination between social actors, menu creation, public calls, contracts, quality control, product delivery, and payment to smallholder farmers.

[Read publication >>](#)



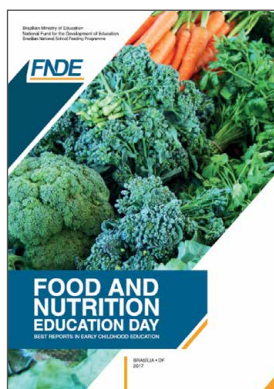
2014

### **Training Food Handlers Working in School Feeding**

This publication is a support material that aims to provide theoretical and scientific support for planning and conducting the training of food handlers working in the National School Feeding Programme (PNAE). This document is intended for those responsible for training school feeding handlers, including managers, the educational and school feeding sectors, nutritionists, among others.

[Read publication >>](#)

## THE BRAZILIAN EXPERIENCE

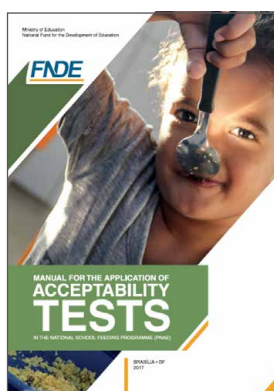


2017

### **Food and Nutrition Education Day - Best Reports in Early Childhood Education**

The publication is the result of a broad process of encouraging debate and the practice of actions of Food and Nutrition Education (FNE) in early childhood education. A publication that gives visibility to creative and transformative initiatives experienced in different realities in Brazil, expressing the richness, diversity and power of FNE in Brazilian public schools and showing that this path is possible and is already being followed by different actors.

[Read publication >>](#)

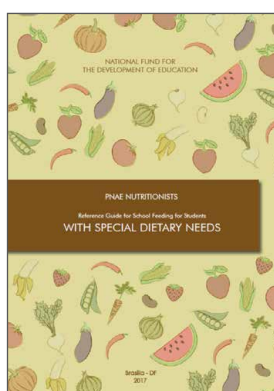


2017

### **Manual for the Application of the Acceptability Tests in the National School Feeding Programme (PNAE)**

PNAE's coordination and the CECANEs of the University of Brasília (UnB) and Federal University of São Paulo (UNIFESP) jointly developed this manual with procedures to apply acceptability tests in the school environment. Acceptability tests are applied to school feeding beneficiaries aiming to strengthen the quality control of the food offered in school meals.

[Read publication >>](#)



2017

### **Reference Guide for School Feeding for Students with Special Dietary Needs**

The Reference Guide and its attachments provide orientations to support the design of menus for children with special dietary needs that benefit from the National School Feeding Programme (PNAE). These documents do not aim to replace the assistance and prescriptions of doctors, nutritionists and other health professionals, but they are based on clinical protocols, therapeutic guidelines (PCDT), national agreements, as well as on applicable legislation.

[Read publication >>](#)

## WFP CoE PRODUCTS AND SERVICES

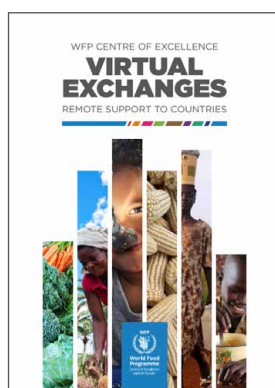


11/07/19

### **The partnership between the WFP Centre of Excellence and the African Union**

This publication features the collaboration between the WFP CoE Brazil and the African Union Commission, to advocate for home-grown school feeding and to support AU member states in their efforts to scale up school feeding across the continent.

[Read publication >>](#)



20/03/20

### **WFP Centre of Excellence Brazil's Virtual Exchanges: Remote Support to Countries**

Since 2011, the WFP Centre of Excellence against Hunger Brazil has been engaging, either onsite and/or remotely, in technical assistance and capacity strengthening for countries in Africa, Asia, and Latin America. This document provides partners with a summary, rationale, and framework of WFP CoE Brazil's Virtual Exchanges, a remote assistance strategy for SDG2 solutions, with a focus on school feeding programmes.

[Read publication >>](#)



07/05/20

### **Supporting the Development and Implementation of Resource Mobilization Initiatives - The Gambia**

The document showcases the path that led to a successful case of project proposal preparation, from the initial call to the final approval of a USD 16 million grant. The process was initiated by the WFP country office in The Gambia in March 2019, when the Global Agriculture and Food Security Programme (GAFSP) was launched. GAFSP is a global fund financed by the G20 and managed by the World Bank. The GAFSP call aimed at providing resources to scale-up agricultural, food and nutrition security assistance to fragile and conflict-ridden countries.

[Read publication >>](#)

**VIRTUAL  
EXCHANGES**

**PUBLICATIONS  
COLLECTION**



### **PNAE and Smallholder Farming Course**

The National School Feeding Programme (PNAE) and Smallholder Farming Course was produced by the Brazilian government to support and disseminate knowledge to school feeding managers and technicians in Brazil. The WFP CoE Brazil adapted the course to an international language, in order to share the Brazilian experience and inspire other countries in the design and implementation of their programmes.

**Access course >>**



### **Virtual Study Visit (Available soon)**

Our newest project, the Virtual Study Visit, aims to bring countries closer to the Brazilian experience in school feeding and social protection, without the need for a face-to-face mission to Brazil. The videos will simulate the entire content of a face-to-face study visit, divided by subject and featuring interviews with experts and consultants from the Brazilian government.